

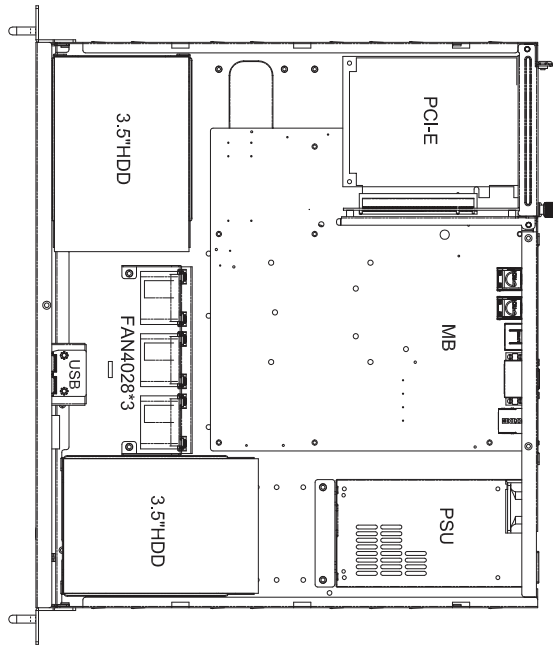
RMC-1E

Features

- Front ventilation for superior cooling
- Front access dual USB ports
- 1 x blower fan for CPU cooling
(See specs for more options)
- Short-depth design for space critical application
- Equipped with 250W power supply



REAR VIEW



TOP VIEW

Power supply is optional. Motherboard is not included.

SPECIFICATIONS

Dimensions (W x D x H)	mm : 427 x 381 x 44.4	
	inches : 16.8 x 15 x 1.75	
Industry Standard	EIA-RS310D	
Material	Heavy-duty preplated SPGC cold-rolled steel	
Color	Front Panel : Black	
Cooling	Standard	2 x 40x28mm fans
	Option	3 x 40x28mm fans
Power Supply	Standard	250W single PSU
	Option	300W single 1+1 redundant PSU
Expansion Slot	1 full height via riser card	
Front Panel	System power on/off, system reset and 2 x USB ports	
LED Indicators	Power status, LAN activity and Drive activity	
System Board	Up to 12"(W) x 9.6"(D) ATX compliant MB	

Drive Bays	Internal	3.5"	2
	Peripheral Drive	Slim DVD-ROM	1
Storage Temperature	0°C(32°F) ~ 50°C(122°F)		
Humidity	5%~95% non-condensing		
Gross Weight	(w/ PSU; w/o Rail)	kgs : 7	
		lbs : 15.4	
Packaging Dimensions	(W x D x H)	mm : 548 x 574 x 173	
		inches : 21.6 x 22.6 x 6.8	
Cubic Feet	1.9		
Container Load Quantity	20'	550	
	40'	1120	
	40' H	1290	
Mounting	Options	20" friction slides	
		26" friction slides	